

U8071-36 Brief Specification



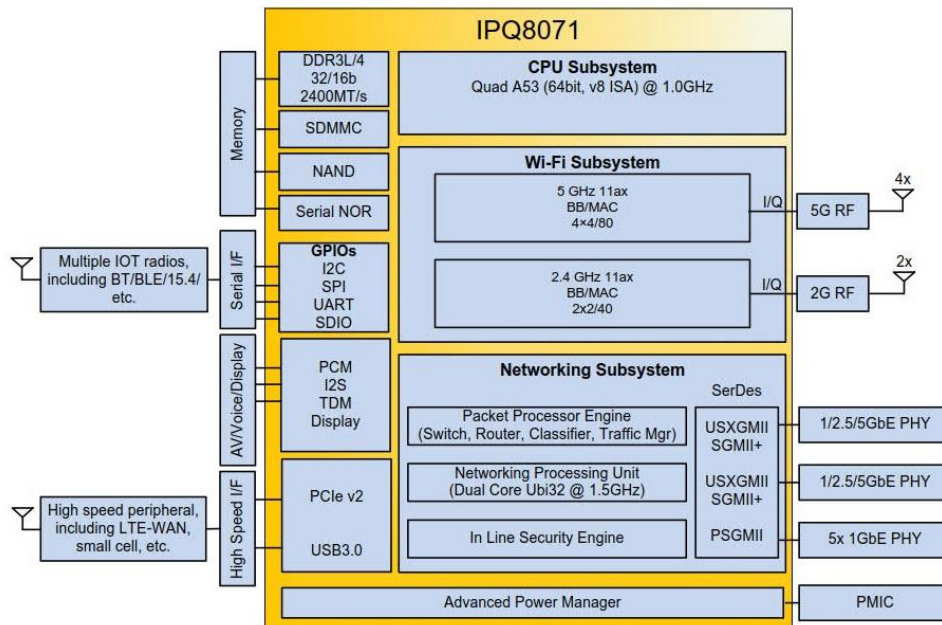
Highlight Features

- Quad ARM Cortex A53s @ 1.0 GHz
- WIFI6 AX3000 platform
- Industry Aluminium Alloy case
- Product data processing is faster and more stable

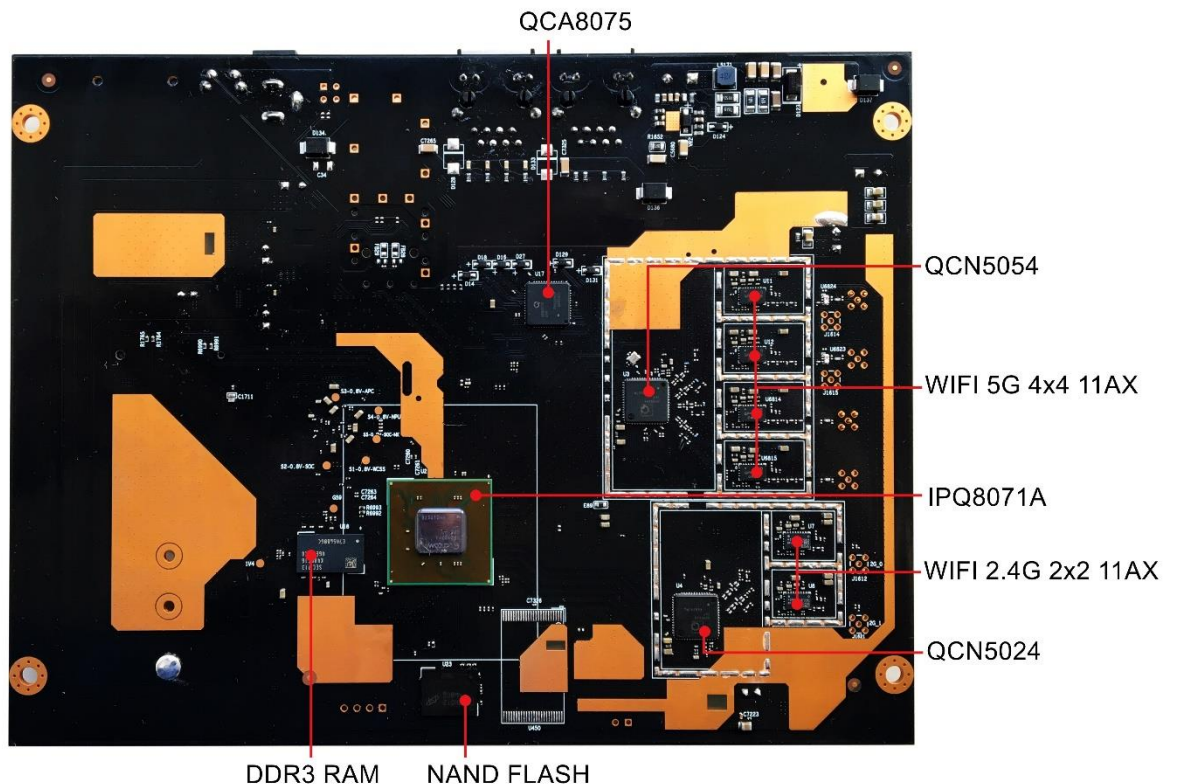
Specifications

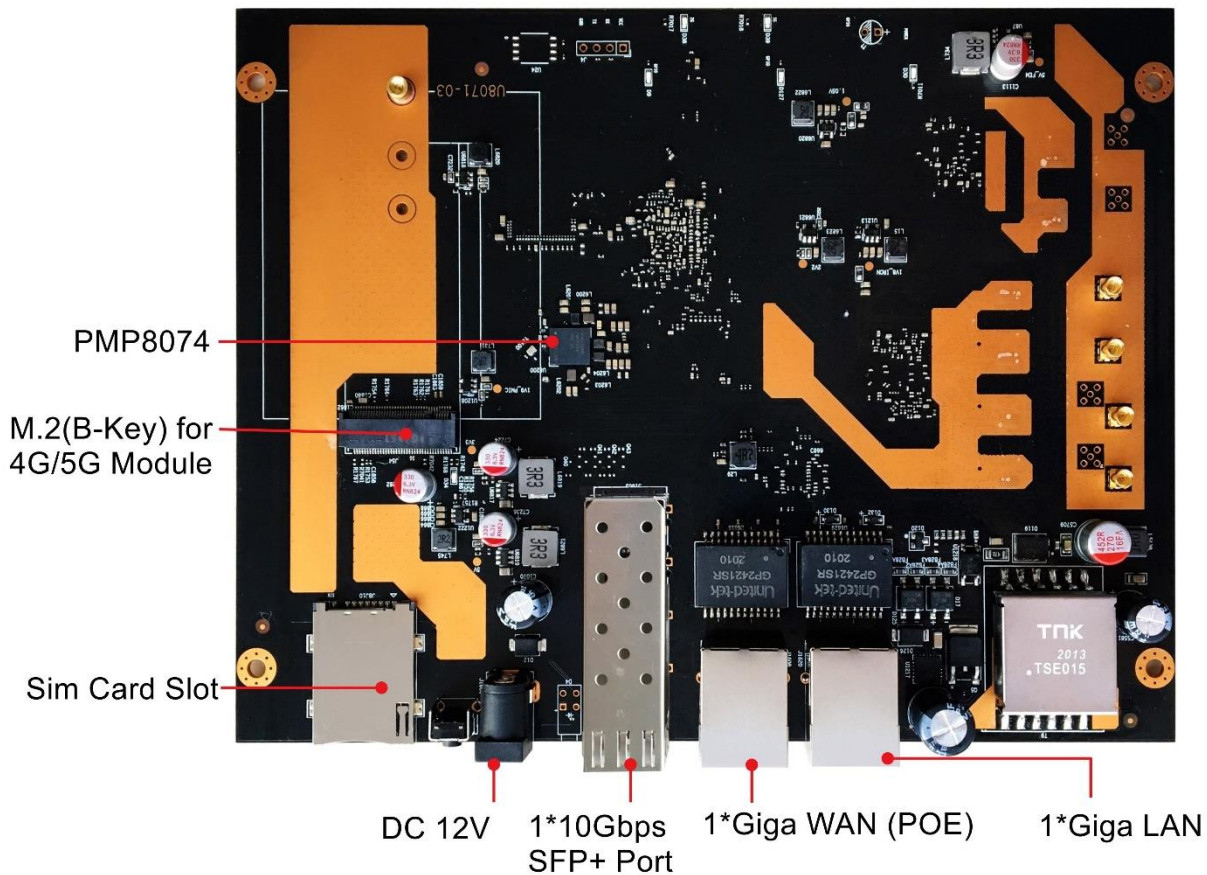
Chipset	CPU: Qualcomm IPQ8071(Optional IPQ8072/IPQ8070) 2.4GHz AX Chip: Qualcomm 2X2; SINGLE-BAND; 802.11AX QCN5024 5GHz AX Chip: Qualcomm 4X4; SINGLE-BAND; 802.11AX QCN5054 Ethernet 5 Giga port switch: Qualcomm QCA8075 Power management: PMP8074
System Memory	Default DDR3-2400 512Mbyte (Optional 256Mbyte)
NAND Flash	Default NAND Flash 256Mbyte (Optional 128Mbyte)
Expansion	1x 5G/LTE Module with a SIM card 1x 10G SFP Slot
Wireless	MU-MIMO 802.11a/b/g/n/ac/ax WiFi 6 2.4GHz 2T2R 600Mbps, B mode@25dBm(Max) 5.8GHz 4T4R 2400Mbps, A mode@24dBm(Max)
Wired Interface	1* WAN Giga with POE PD 25W Support (802.3at & af standard) 1* LAN Giga Ethernet RJ45 Port
Reset Button	1x Factory Restore Button (GPIO)
DC Power	1x DC Jack Connector (Default 12V@2A)
Power Consumption	20W(Max), 12V@2A in full range
Software	Qualcomm QSDK which includes Uboot, Kernel and Tool Chain
Environmental	Temperature: Operating: 0°C to 50°C, Storage: -40°C to 90°C Humidity (non-condensing): Operating: 5% to 95%, Storage: Max. 95%
Case	Material: Aluminium Alloy, Dimensions: 304*184*88mm

IPQ8071 Block Diagram



Board Block Diagram





Customization Options

UniElec have engaged in providing global customers with professional ODM/OEM service of customized stable and cost-effective electronic products. We can customize total production for the customer including Chassis, Hardware, Software and Package as below customization options for this product. Contact us at sales@unielecinc.com for more detailed info.

Name	Customization Comments	UniElec Customization
Memory	Change to 256Mbyte DDR3	Supported
Nand Flash	Change to 128Mbyte NAND	Supported
5G/LTE Module	Select the right M2 5G/LTE module for your application	Supported
Case	Select the different case material for your application	Supported

Ordering Information

Models	Comments
U8071-36	256Mbyte NAND Flash and 512Mbyte DDR3 RAM

UniElec Platform Catalog

